

# ILLUMINATION

## LED Panel Light ( P6 )

- » Dust-Free workshop auto-production
- » DLC Standard & Premium
- » Driver flicker free optional

### Same features of Flat Panel Light

- Color Rendering: Ra ≥ 80
- Beam Angle: 120° ± 5°
- IP Rate: IP40
- Lamp Shell Temp Increase: < 20 °C
- Design Lifespan: ≥ 50000H
- Working Temperature: -25°C~45°C
- Material: Aluminum alloy+LGP

### Color Temperature



Warm White  
3000K

Pure White  
4000K

Cool White  
5000K



0-10v Dimming



### Technical Data



Item No.:	CPS-U4A25-P6	CPS-U4A32-P6	CPS-U4A36-P6A	CPS-U4A40-P6
Power(W)	25W	32W	36W	40W
Size	603*603mm	603*603mm	603*603mm	603*603mm
Luminous Flux(LM)	3250 ± 8%	4160 ± 8%	4680 ± 8%	4000 ± 8%
Lighting Effect	130 LM/W	130 LM/W	130 LM/W	100 LM/W
Carton(mm)	645*190*650mm(4PCS)	645*190*650mm(4PCS)	645*190*650mm(4PCS)	645*190*650mm(4PCS)

### Technical Data



Item No.:	CPS-U4A20-P6A	CPS-U4A30-P6A	CPS-U4A32-P6A	CPS-U4A36-P6/A
Power(W)	20W	30W	32W	36W
Size	603*603mm	603*603mm	603*603mm	603*603mm
Luminous Flux(LM)	2600 ± 8%	3900 ± 8%	4160 ± 8%	3600/4680 ± 8%
Lighting Effect	130 LM/W	130 LM/W	130 LM/W	100/130 LM/W
Carton(mm)	645*190*650mm(4PCS)	645*190*650mm(4PCS)	645*190*650mm(4PCS)	645*190*650mm(4PCS)

Specifications above are only for CREP standard products, customized requirements are available.

Remark: Common technical features for LED Panel

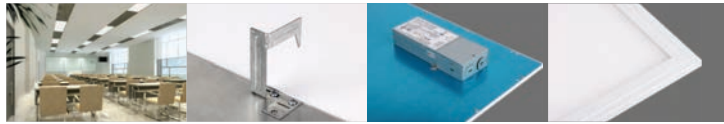
Voltage(V)	Drive mode	Power Factor (PF)	Color Rendering ( Ra )	Material	Design Lifespan	Working Temperature(°C)
AC100-277V 50-60Hz	Switch constant current	≥0.92	≥82	Aluminum alloy+LGP	≥50000H	-25°C~45°C



1X4 ft



0-10v Dimming



Technical Data 

Item No.:	CPS-U3A32-P6/A	CPS-U3A36-P6	CPS-U3A40-P6
Power(W)	32W	36W	40W
Size	303*1213mm	303*1213mm	303*1213mm
Luminous Flux(LM)	4160 ± 8%	4680 ± 8%	4000 ± 8%
Lighting Effect	130 LM/W	130 LM/W	100 LM/W
Carton(mm)	1255*190*350mm(4PCS)	1255*190*350mm(4PCS)	1255*190*350mm(4PCS)

Technical Data 

Item No.:	CPS-U3A32-P6A	CPS-U3A36-P6
Power(W)	32W	36W
Size	303*1213mm	303*1213mm
Luminous Flux(LM)	4160 ± 8%	4680 ± 8%
Lighting Effect	130 LM/W	130 LM/W
Carton(mm)	1255*190*350mm(4PCS)	1255*190*350mm(4PCS)

Specifications above are only for CREP standard products, customized requirements are available.

Remark: Common technical features for LED Panel

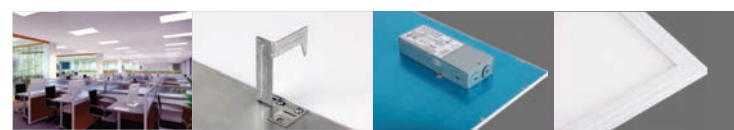
Voltage(V)	Drive mode	Power Factor (PF)	Color Rendering ( Ra)	Material	Design Lifespan	Working Temperature(°C)
AC100-277V 50-60Hz	Switch constant current	≥0.92	≥82	Aluminum alloy+LGP	≥50000H	-25°C~45°C



2X4 ft



0-10v Dimming



Technical Data 

Item No.:	CPS-U5A40-P6	CPS-U5A50-P6/A	CPS-U5A70-P6
Power(W)	40W	50W	70W
Size	603*1213mm	603*1213mm	603*1213mm
Luminous Flux(LM)	5200 ± 8%	5000 ± 8% / 6500 ± 8%	7000 ± 8%
Lighting Effect	130 LM/W	100/130 LM/W	100 LM/W
Carton(mm)	1255*190*650mm(4PCS)	1255*190*650mm(4PCS)	1255*190*650mm(4PCS)

Technical Data 

Item No.:	CPS-U5A35-P6A	CPS-U5A40-P6	CPS-U5A50-P6/A
Power(W)	35W	40W	50W
Size	603*1213mm	603*1213mm	603*1213mm
Luminous Flux(LM)	4550 ± 8%	5200 ± 8%	5000 ± 8% / 6500 ± 8%
Lighting Effect	130 LM/W	130 LM/W	100/130 LM/W
Carton(mm)	1255*190*650mm(4PCS)	1255*190*650mm(4PCS)	1255*190*650mm(4PCS)

Specifications above are only for CREP standard products, customized requirements are available.

Remark: Common technical features for LED Panel

Voltage(V)	Drive mode	Power Factor (PF)	Color Rendering ( Ra)	Material	Design Lifespan	Working Temperature(°C)
AC100-277V 50-60Hz	Switch constant current	≥0.92	≥82	Aluminum alloy+LGP	≥50000H	-25°C~45°C

# Installation mode

## ▶ 1.Surface Mounted



609X609X70mm for 2x2ft LED Panel



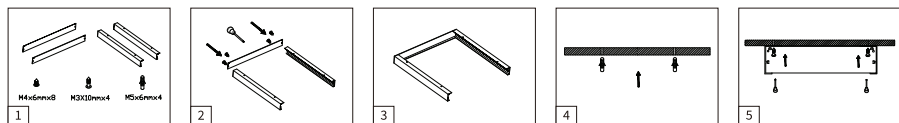
305X1216X70mm for 1x4ft LED Panel



609X1216X70mm for 2x4ft LED Panel



### Surface Mounted



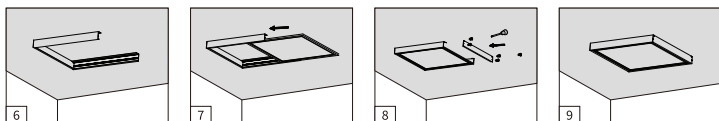
Check spare parts as above list

Connect 2 sides board +back board with screws

After 2nd step, comes out above chart

Put the expansion screws into the ceiling

Put the 3rd steps fixture into ceiling by screws



After the 5th step, comes out above chart

Insert led panel light as above chart

Lock the last mounted piece as above chart

Finished mounting chart

## ▶ 2.Recessed installation

Installation option



1. Pull up the earth quake hook until it is perpendicular to the panel backing. (See picture 1)
2. Bend the hook arm until it is perpendicular to the hook body. (See picture 2)
3. Hook the panel to the T-Bar until it is full supported. (See picture 3)



Earthquake hook



Before installation



After installation

## ▶ 3.Suspending Kits

Model 1:CPS-MBDJ-01

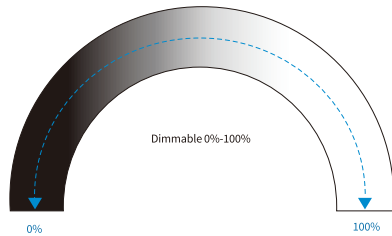


Model 2:CPS-MBDJ-02

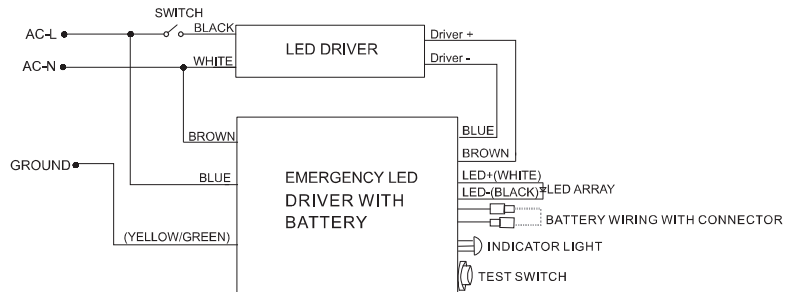
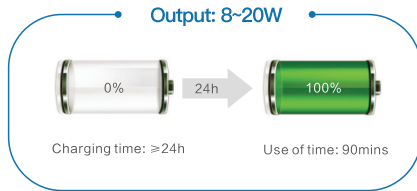


# Magic Panel Optional Function

## ▶ 1. Brightness Dimmable ( 0-10v & Resistance & PWM )



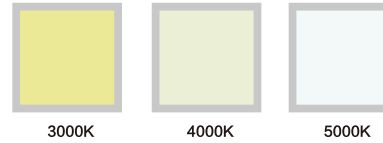
## ▶ 2. Emergency (for 20~70W Led lamp)



## ▶ 3. Color Tunable

Mode 1:

Choose the right color by the switch on cable before installation.



Mode 2:

Choose the right color by the wall switch after installation.



CCT Changeable



Dimmable



Morning 6:30

5000K  
Day White



Noon 12:30

4000K  
Natural White



Night 19:30

3000K  
Warm White